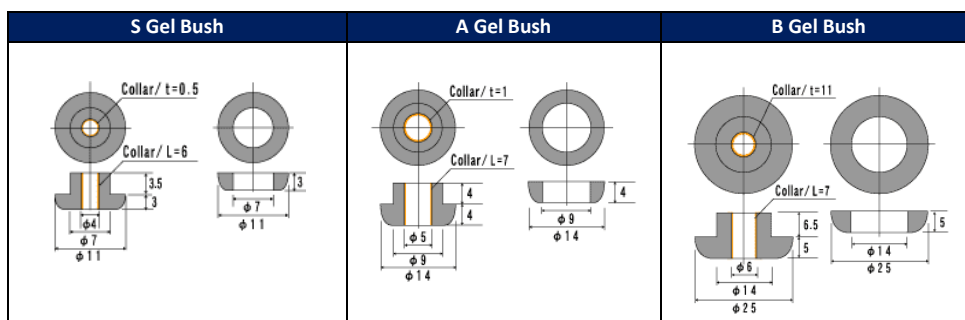


SOFT SILICONE GEL BUSHES



- Small, soft and easily compressible.
- Designed to dampen tiny to light loads and micro vibrations.
- Effective for minimising horizontal drift, using a bolt through the middle.
- Mechanically reinforced strength ensures long term high performance.
- Suits weight range from 0.2 to 32kg (per set of 4 bushes).
- Temperature Range: -40°C to +200°C.
- Typical applications include CCTV systems, surgical equipment, robots, drones, home appliances and automotive.

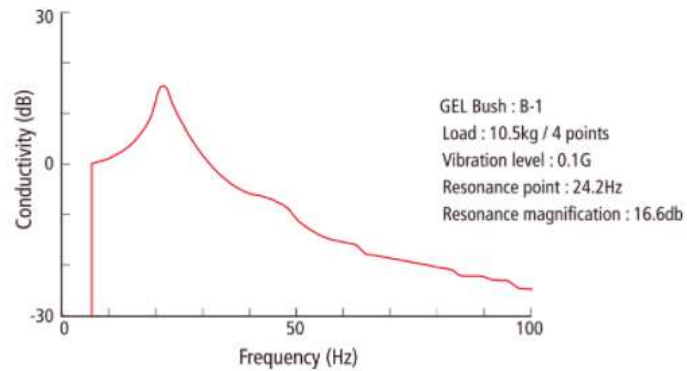


Part Number	Outer Diameter	Flange Height	Inner Diameter	Collar Hole Inner Diameter	Mounting Hole Diameter	Centre Fixing Height	Maximum Board Thickness	Engineering Drawing
S1 GEL BUSH	11	3	4	3	7	3.5	1.8	PDF
S5 GEL BUSH	11	3	4	3	7	3.5	1.8	PDF
A1 GEL BUSH	14	4	5	3	9	4	2.4	PDF
A2 GEL BUSH	14	4	5	3	9	4	2.4	PDF
B1 GEL BUSH	25	5	6	4	14	6.5	4.5	PDF
B2 GEL BUSH	25	5	6	4	14	6.5	4.5	PDF

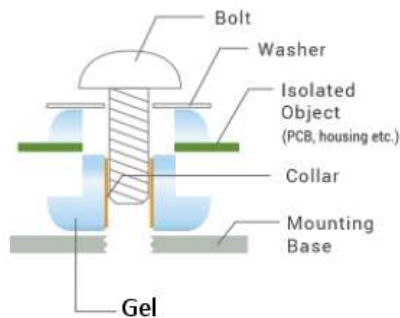
Dimensions in mm

Part Number	Optimum Load (kg/4 legs)	Shore A Hardness (appx)	Gel Type	Resonance Magnification (db)	Recommended Frequency (Hz)	Resonance Point
S1 GEL BUSH	0.2 ~ 0.75	6	Theta-7	7 ~ 9	0.2kg: from 90 0.75kg from 60	64 to 42
S5 GEL BUSH	0.4 ~ 1.2	10	Theta-5	tba	tba	n/a
A1 GEL BUSH	0.5 ~ 2.5	10	Theta-5/6	9 ~ 10	0.5kg from 95 2.5kg from 50	67 to 35
A2 GEL BUSH	2.5 ~ 4.0	14	Theta-6	15 ~ 16	2.5kg from 70 4.0kg from 55	49 to 37
B1 GEL BUSH	4 ~ 15	15	Theta-6	15 ~ 17	4kg from 70 15kg from 35	49 to 23
B2 GEL BUSH	15 ~ 32	27	Theta-8	19 ~ 23	15kg from 30 32kg from 25	38 to 20

Dampening Characteristics



Installation Diagram



Notes

- As the product is very soft, please handle with care.
- Tighten the bolt all the way to the collar.
- Usable bolts are M3 or smaller for S and A bush profile, and M4 or smaller for B bush profile.
- Use a washer equal to or bigger than the diameter of the upper portion of the gel bush.
- The internal brass collar insert is removable.

[Silicone Gel Properties](#)

[Performance Graphs](#)

[Terminology](#)